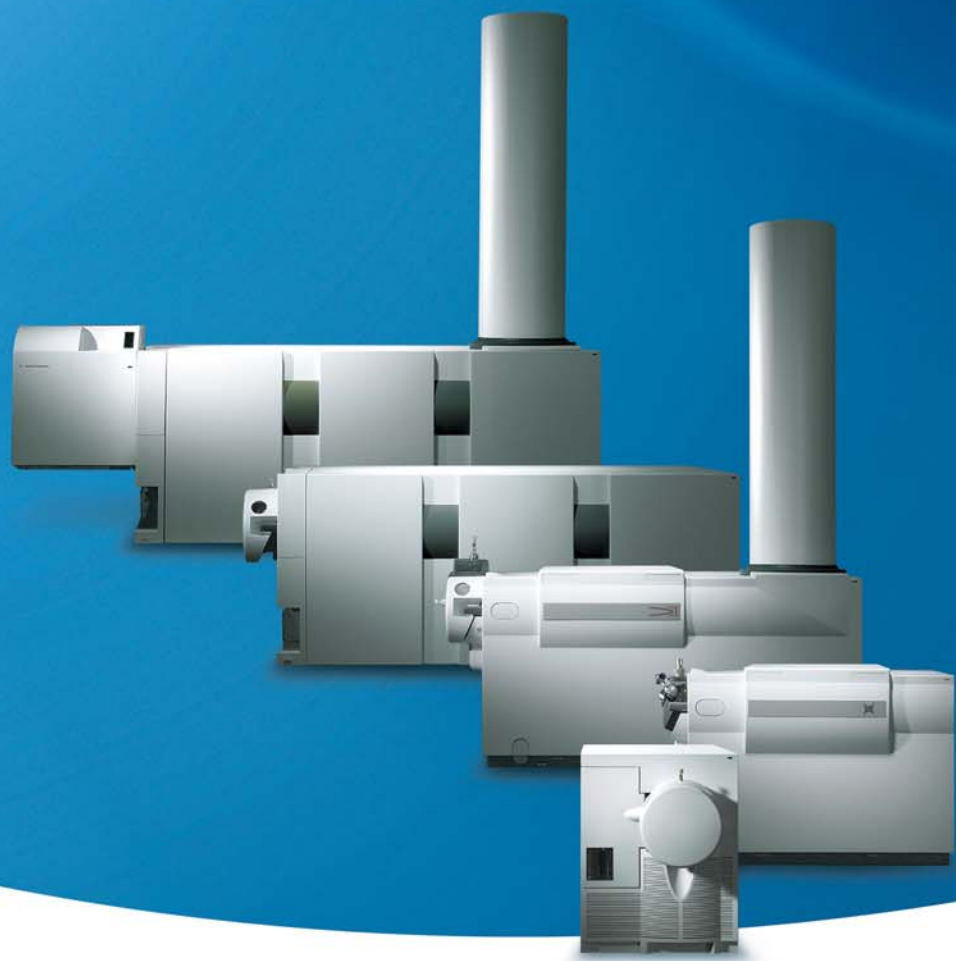


Agilent 6000 Series LC/MS Systems
All the performance. All the time.



Agilent Technologies

An Expanded Commitment to LC/MS

The new Agilent 6000 Series family of LC/MS systems represents a major commitment by Agilent to LC/MS users; a commitment to create LC/MS systems that provide not only exceptional analytical performance, but exceptional reliability and ease of use.

Expanded LC/MS portfolio

The 6000 Series includes new single quadrupole, triple quadrupole and Q-TOF instruments, and improved versions of Agilent's proven time-of-flight (TOF) and ion trap instruments.

- **6510 Quadrupole Time-of-Flight LC/MS** – delivers unsurpassed Q-TOF sensitivity, and the confidence of very accurate mass measurements, in a compact, bench-top design
- **6410 Triple Quadrupole LC/MS** – establishes a new standard for value in a triple quadrupole mass spectrometer; delivering outstanding sensitivity, great ease of use, and legendary Agilent reliability at a very attractive price
- **6300 Series Ion Trap LC/MS systems** – a family of ultrasensitive and very reliable ion traps, with innovations like the electron transfer dissociation (ETD) for improved analysis of proteins with post-translational modifications
- **6210 Time-of-Flight LC/MS** – unrivaled TOF mass accuracy, mass resolution, and dynamic range, with conveniences like automated tuning and automated, continuous introduction of a reference mass standard
- **6100 Series Quadrupole LC/MS systems** – deliver more performance and Agilent's unrivaled reliability and ease of use in a new, smaller package.



Sharing proven technologies and innovations

The 6000 Series gains strength from its sharing of both proven components and ground-breaking innovations. The new 6510 Q-TOF gets its outstanding mass accuracy, resolution, and dynamic range from the high-performance TOF components proven on the 6210 TOF. The 6410 Triple Quad and 6510 Q-TOF share Agilent's innovative new high-pressure, linear-acceleration collision cell, which optimizes MS/MS fragmentation while eliminating cross-talk. Agilent ion sources are easily interchangeable between Agilent 6000 Series instruments.

Sources for every application

Complementing the 6000 Series LC/MS systems, Agilent offers an expansive selection of LC/MS ion sources to meet the widest range of applications and analytical requirements.

Agilent ion sources use orthogonal nebulization and high-temperature, counter-flow drying gas to maximize performance, reliability, and ease of use. Recent innovations include Agilent's revolutionary multi-mode source that *simultaneously* generates ions by both electrospray and APCI—without the loss of sensitivity experienced by competing sources that have to switch between the two ionization modes.



LC/MS for Life Science Research

From protein identification and characterization to biomarker discovery and metabolomics studies, Agilent's expanded portfolio of LC/MS platforms and solutions for bioresearch help you obtain expert results with less effort.

Proteomics

6510 Quadrupole Time-of-Flight LC/MS

The 6510 Q-TOF delivers ultimate versatility, analytical performance, and mass accuracy for profiling, identification, and characterization of proteins and peptides.



6300 Series Ion Trap LC/MS systems

6300 Series ion traps with MSⁿ are popular, high-sensitivity tools for protein identification. New electron transfer dissociation (ETD) capability improves analysis of post-translational modifications.



6410 Triple Quadrupole LC/MS

Perform targeted quantitative analysis with the multiple reaction monitoring (MRM) and outstanding sensitivity of the 6410 Triple Quad.



6210 Time-of-Flight LC/MS

Application-specific software and mass accuracy that approaches FTMS levels make the 6210 TOF ideal for high-throughput protein and peptide confirmation or expression profiling.



Metabolomics

6410 Triple Quadrupole LC/MS

For targeted metabolite verification, the 6410 Triple Quad combines multiple reaction monitoring (MRM) with outstanding sensitivity.



6510 Quadrupole Time-of-Flight LC/MS

MS/MS and accurate mass measurements at unsurpassed levels of sensitivity make the 6510 Q-TOF perfect for positive identification and characterization of metabolites.



6210 Time-of-Flight LC/MS & CE/MS

The sub-3-ppm mass accuracy of the 6210 TOF provides reliable, positive identification of small molecules. With Mass Profiler and GeneSpring software, the 6210 is an excellent way to screen for key metabolites.



LC/MS for Pharmaceutical Analysis in Drug Discovery, Development, and QA/QC

LC/MS techniques are key to rapidly bringing new drugs to market. Whether you are performing quantitative analyses such as compound confirmation, identification, and characterization; ADME and toxicology studies; quantitative DMPK; or QA/QC, Agilent LC/MS solutions combine excellent performance with Agilent's legendary reliability, service, and support.

Qualitative analyses

6510 Quadrupole Time-of-Flight LC/MS

When the financial stakes are the highest, the 6510 Q-TOF's combination of MS/MS structural information and accurate mass measurements provides the ultimate in confident identification.



6300 Series Ion Trap LC/MS systems



Automated, data-dependent MS/MS and MSⁿ and a wide range of ionization choices make the 6300 Series ion traps reliable workhorses for identification of unknowns and for structural elucidation.

6210 Time-of-Flight LC/MS

Before expensive testing of synthetic drug candidates, the 6210 TOF is an excellent choice for reliable, high-throughput confirmation of compound identities. Its sub-3-ppm mass accuracy also provides identification of unknowns.



Quantitative analyses

6410 Triple Quadrupole LC/MS

For ADME, toxicology, and pharmacokinetics studies, the 6410 Triple Quad LC/MS and application-specific ZORBAX columns provide sensitive, accurate, and economical quantitative analyses of samples in complex and varied matrices.



6100 Series Quadrupole LC/MS systems

For high-throughput QA/QC, or verification and purification of combinatorial products, the new 6100 Series features faster scanning (10,000 u/s), a smaller footprint, and Agilent's legendary reliability and ease of use.



LC/MS for Food Safety, Environmental, Forensic, and Clinical Applications

Agilent Technologies is the leading supplier of LC, GC, and GC/MS systems for chemical analysis. As analytical requirements in these markets grow to include LC/MS, our expanded portfolio of LC/MS solutions is ready to provide the high productivity and utmost reliability you've come to expect from Agilent.

Qualitative analyses

6510 Quadrupole Time-of-Flight LC/MS

The 6510 Q-TOF combines the information content of MS/MS with the confidence of extremely accurate mass measurements to ensure compound identification in the most complex samples.



6300 Series Ion Trap LC/MS systems



Multiple stages of MS/MS and automated, data-dependent acquisition options in the 6300 Series ion traps make structural confirmation and sample identification easier.

6210 Time-of-Flight LC/MS

When your high-throughput screening applications require high-confidence confirmation, the sub-3 ppm mass accuracy of the 6210 TOF delivers. The 6210 uses automated, continuous introduction of a reference mass compound at very low levels to maintain consistent mass accuracy without interfering with analyses.



Quantitative analyses

6410 Triple Quadrupole LC/MS

For quantification in complex or dirty matrices, MS/MS analysis with triple quadrupole LC/MS systems is the gold standard. The 6410 Triple Quad has all of the sensitivity you need and the reliability to analyze large numbers of samples economically.



6100 Series Quadrupole LC/MS systems

The new 6100 Series offers higher performance, and unrivaled reliability and ease of use, in a smaller package. The multimode source, one of many available ion sources, allows the 6100 Series to acquire positive and negative, electrospray and APCI data in a single run without sacrificing sensitivity.



6210 Time-of-Flight LC/MS

Great spectral sensitivity and the specificity of excellent resolution and mass accuracy allow the 6210 TOF to positively identify non-target compounds without rerunning samples.

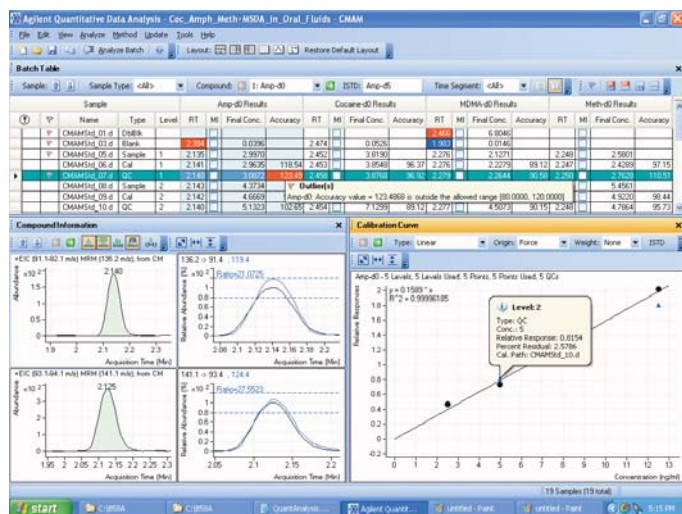


LC/MS software that helps you find better answers more easily

The right software is essential to acquiring the best possible LC/MS data, and to turning that data into meaningful answers. Agilent LC/MS systems include instrument control and data analysis software to help you obtain maximum results with minimum effort. Powerful, application-specific software is available to optimize data analysis for specialized applications.

Easier instrument control and better data analysis

Each of Agilent's 6000 Series LC/MS systems includes software designed around the specialized instrument control and data analysis requirements of that system. The software integrates control of all LC and MS operating parameters in a single interface, automates tuning and mass calibration, and streamlines data acquisition, data review, and result reporting.



New quantitation software, part of the MassHunter Workstation software for TOF, triple quad, and Q-TOF instruments, includes effort-saving features like parameterless integration and a curve-fit assistant

Simplified access to instruments and data

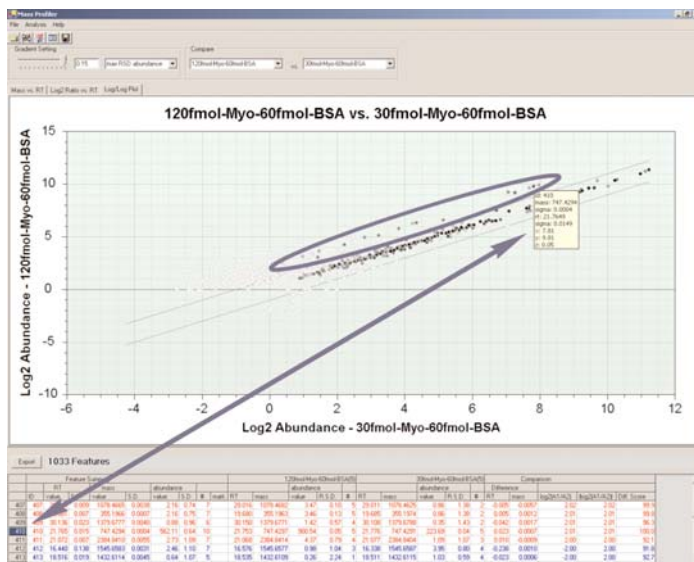
Additional software is available to make the power of LC/MS accessible to more researchers and to simplify data review.

- **MassHunter Easy Access software** – enables simple, walk-up operation and is ideal for shared-instrument, multi-user environments
- **Data Browser software** – facilitates data review on remote PCs

Extract as much information as possible from every sample

Application-specific software helps you maximize the information extracted from every sample. Agilent offers a wide range of application-specific software packages including:

- **MassHunter Bioconfirmation software** – confidently confirms protein and peptide identities and identifies unknowns
- **MassHunter Profiling software** – applies optimized tools to differential expression studies for biomarker discovery or metabolite profiling
- **Spectrum Mill for MassHunter Workstation software** – searches protein databases faster and reduces false positives
- **Glycomics software** – facilitates identification and characterization of glycans for glycomarker studies or analysis of recombinant glycoproteins



MassHunter Profiling software compares samples and finds differences in expression levels. It is only one of many application-specific software packages that help you maximize productivity and minimize effort.

Integrating superior LC technology to maximize LC/MS performance and productivity

Coming from a single vendor, Agilent's industry-leading LCs and columns work seamlessly with our MS instruments, improving both performance and productivity. Revolutionary microfluidic HPLC-Chips provide better chromatographic resolution and increase MS sensitivity, while being much easier to use than conventional nanocolumns.

Great LC improves LC/MS

Agilent's new 1200 Series LCs offer unprecedented stability and repeatability at every flow rate — exactly what you need to achieve the best possible separations and maximize performance of your 6000 Series LC/MS instruments. For high-throughput applications, the new 1200 Series Rapid Resolution LC system provides up to 20 times faster analysis and 60% higher resolution than conventional HPLC without sacrificing resolution, precision, or sensitivity.



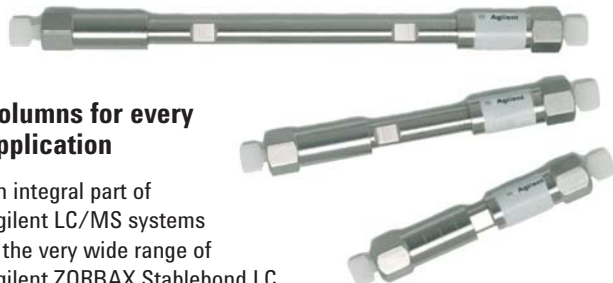
1200 Series LCs and Rapid Resolution LCs set new standards for performance and reliability



Columns for every application

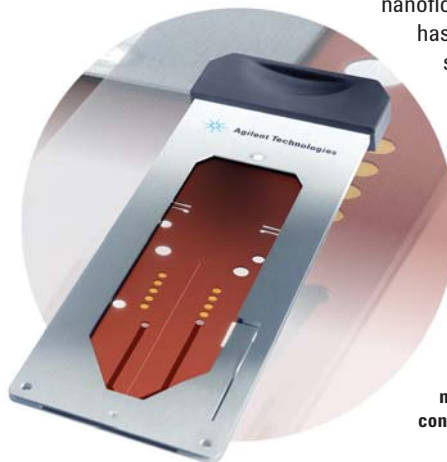
An integral part of Agilent LC/MS systems is the very wide range of Agilent ZORBAX Stablebond LC columns designed specifically for LC/MS mobile phases and samples:

- Narrow diameters and longer lengths for superior resolution and sensitivity
- Capillary and nanocolumns for complex protein and peptide mixture analysis
- Rapid resolution (RR) and rapid resolution high-throughput (RRHT) LC columns for fast and high-throughput LC/MS with excellent resolution
- Multiple affinity removal columns and high-recovery protein columns to reveal more low-abundance proteins



Easy, reproducible, nanoflow separations

Agilent's revolutionary HPLC-Chips seamlessly integrate the sample enrichment and separation columns of a nanoflow LC system with the intricate connections and spray tip used in electrospray mass spectrometry. The result is a monolithic polyimide chip the size of a microscope slide that provides superior nanoflow separations without the hassles of conventional nanoflow LC solutions. The HPLC-Chip Cube MS interface completely automates chip handling, positioning, and connections to ensure maximum performance with minimum effort.



HPLC-Chips increase chromatographic resolution and MS sensitivity, and are much easier to use than conventional nanocolumns

Service and support — global reach, local response

Agilent's service organization has one focal point: providing our customers with the best service available anywhere. With service center operations in 65 countries, a global dispatch system to optimize coverage by service professionals, and call centers ready to assist with both Agilent and non-Agilent instruments, you can trust Agilent to be there when you need us.

Agilent's worldwide network of support services can simplify lab management and eliminate maintenance and repair worries. Our comprehensive services portfolio includes preventive maintenance, on-site repair, consulting, and regulatory compliance assistance. You select the services that are right for your lab. Obtain comprehensive insurance against unexpected repair costs by purchasing a service agreement with your instrument.

A service partnership with Agilent puts our responsive, highly skilled professionals—trained in an ISO 9001 factory program—to work for you. They use only genuine Agilent replacement parts, and procedures and specifications designed to maximize the productivity, maintain the integrity, and extend the life of your instruments.

For more information

Learn more:

www.agilent.com/chem/lcms

Buy online:

www.agilent.com/chem/store

Find an Agilent customer center in your country:

www.agilent.com/chem/contactus

U.S. and Canada

1-800-227-9770

agilent_inquiries@agilent.com

Europe

info_agilent@agilent.com

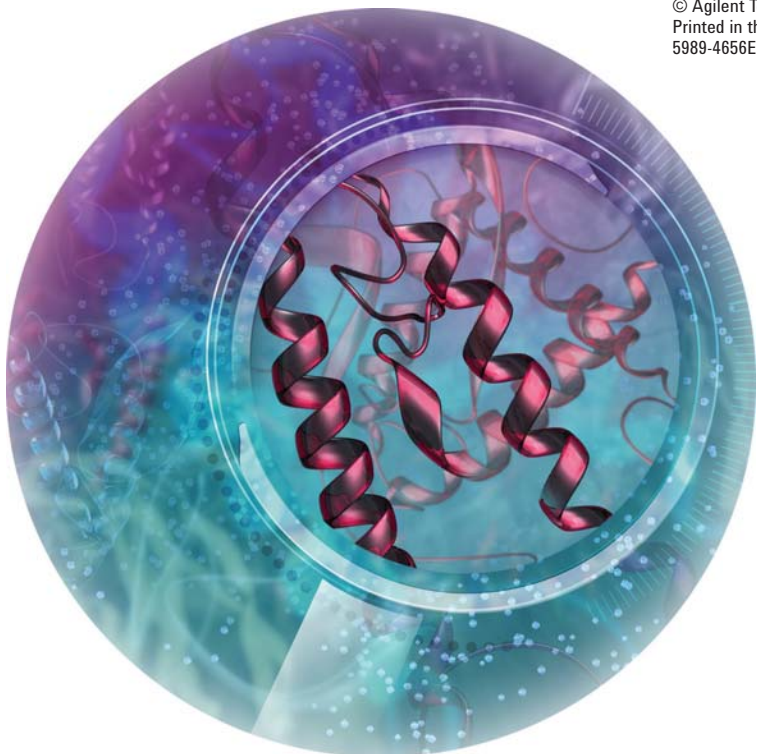
Asia Pacific

adinquiry_aplsca@agilent.com

Research use only. Information, descriptions and specifications in this publication are subject to change without notice.

Agilent Technologies shall not be liable for errors contained herein or for incidental or consequential damages in connection with the furnishing, performance or use of this material.

© Agilent Technologies, Inc. 2006
Printed in the USA May 11, 2006
5989-4656EN



Agilent Technologies